

1 Turn on system and computer



VLS Power Switch

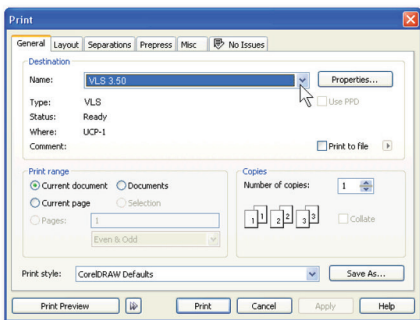


PLS Power Switch

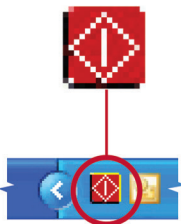
The location of the power switches for your system is indicated above.

2 Print your design

Print your intended design from your software program, selecting the laser system as your printer. Click on the Universal Laser Systems Control Panel icon to open the control panel and display your design.

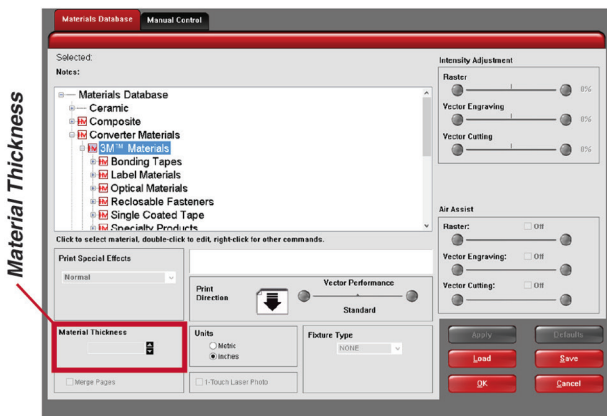


UCP Icon



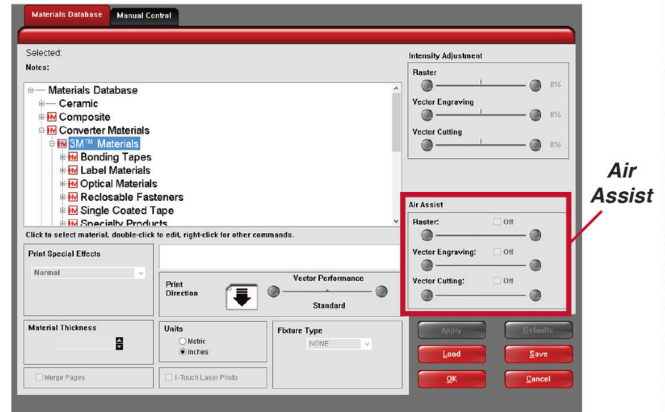
3 Select your target material

Click on the "Settings" button. In the window that appears, click the "Materials Database" tab. Select the material to be processed and then enter in the thickness of the material in the "material thickness" field. If using air assist, go to step 4, otherwise press OK.



4 Activate air assist (optional)

When processing certain materials, quality can be improved by activating air assist. Click one or more of the boxes marked "air assist" for the types of operation you will be performing (vector cutting, vector marking, raster marking) and set the air flow level as desired. Press OK.



5 Place material in laser system

Open the top cover and place the material to be processed into the laser system. Use the rulers at the top and sides of the work space to align your material with the drawing shown on the Universal Control Panel.



6 Turn on exhaust

Make sure the exhaust system is on.

7 Press Go



IMPORTANT! NEVER LEAVE THE SYSTEM UNATTENDED WHILE IT IS PROCESSING!

4 Key Rules

for safe and successful Digital Laser Material Processing

1 CLEAN OPTICS

*Inspect frequently – Only clean as needed
(beam window, mirror 2, & carriage assembly)*

2 FOCUSED OPTICS

Enter the exact material thickness in the Materials Database. Check the focus with focus tool frequently

3 EXHAUST / EXTRACTION

Exhaust must be on and flowing freely at all times during operation

4 ATTENDANCE

Never leave the system unattended during operation

The nearest fire extinguisher is located:

For assistance please call: 02 9584 9499

or email: support@LSTgroup.com.au

LST GROUP